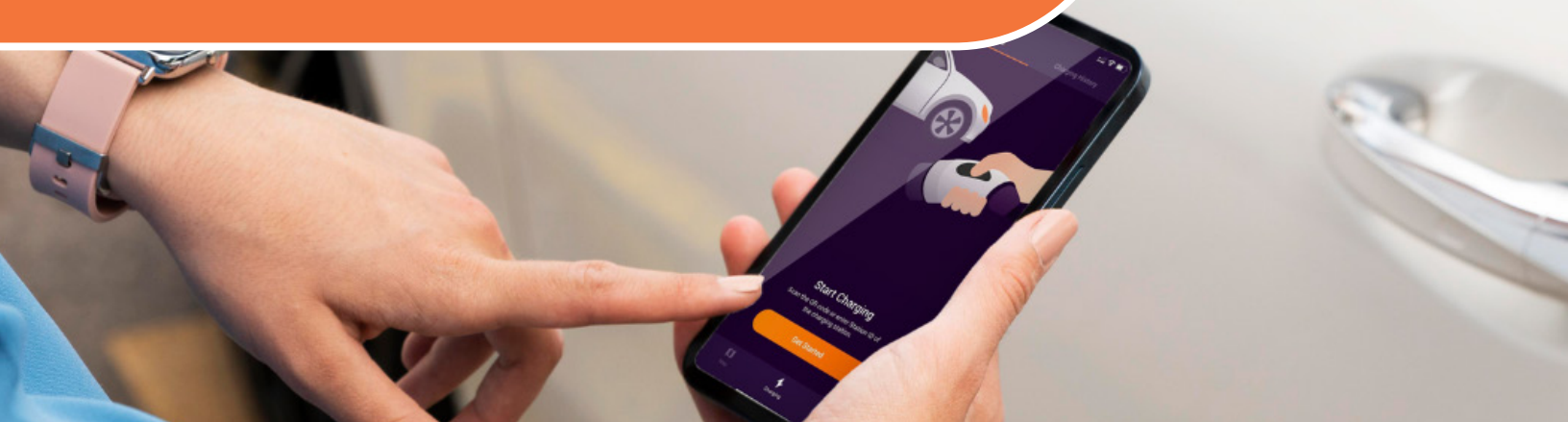


Noodoe App Quick Guide



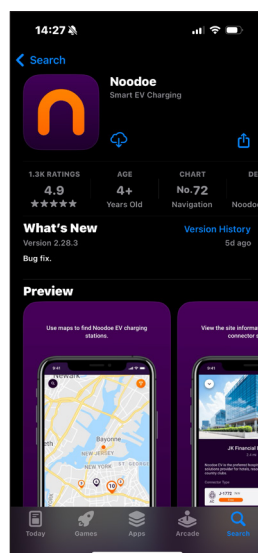
Downloading the App

The Noodoe app is available to download on the Apple Store and Google Play. You can find direct links to the app pages in the noodoe.com sidebar, or by searching “Noodoe” in your preferred online application store.

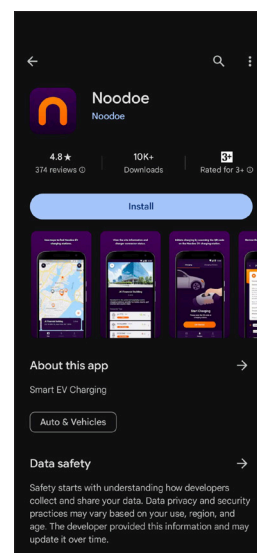
Download directly from www.noodoe.com

The screenshot shows the Noodoe website with a navigation bar (Solutions, Products, Resources, Company) and a main banner for "EV charging for public parking". On the right side, there is a sidebar with the "Noodoe App" section, which includes download links for the App Store and Google Play, and a "Contact Info" section with the address: 2600 Technology Drive, Suite 100, Plano, Texas, 75074, United States, and the email info@noodoe.com.

App Store

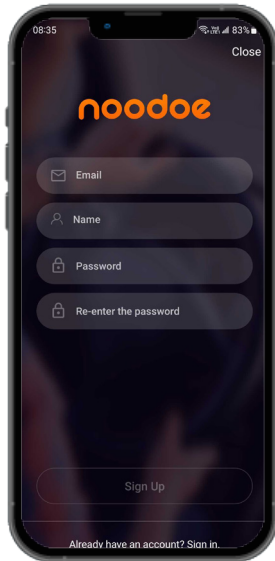


Google Play



Create an Account

First-time users find the Sign In tab in the app's footer banner. Once logged in, this tab will be named Profile and can be used to further control your user experience.



1. Enter a valid email address
2. Enter a user name (must be between 3 and 25 characters)
3. Enter a strong password for enhanced security (must be at least 8 characters long)
4. An email will be sent to confirm account setup process

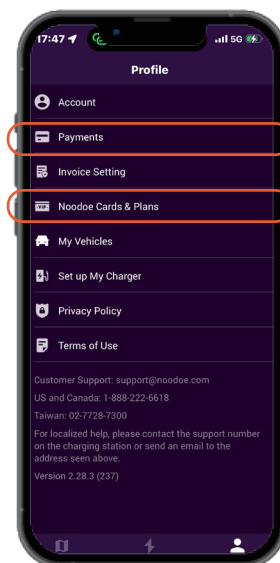
If you already have an account, you can sign in directly, sign in with Google, or sign in with Facebook.

Add Payment Methods

The Noodoe app allows payment from all major credit cards and some virtual wallets, e.g., Google Pay. A valid payment method must be added to your account to complete charging session activation.

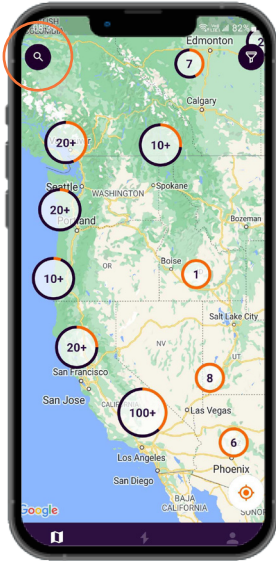
RFID card and membership plans are also accepted payment methods for straightforward and speedy charging session activation.

Contact info@noodoe.com for more information about membership benefits and fleet RFID cards



Using the Map

Allow the Noodoe app to know your location to enjoy the most accurate experience when using the map to explore charging opportunities. While recommended, location access is not required to use the map.



Explore your area by zooming in on the map

or

Search for charging sites by name or address

Selecting a charging station will provide more information, such as availability, pricing details, and site photos for easy navigation.

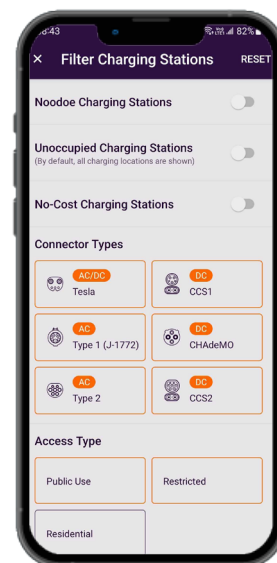
Click the **GO** button and enjoy immediate charging instructions.

Filter Charging Stations

You can use the filter search settings when you're looking for a particular charging experience.

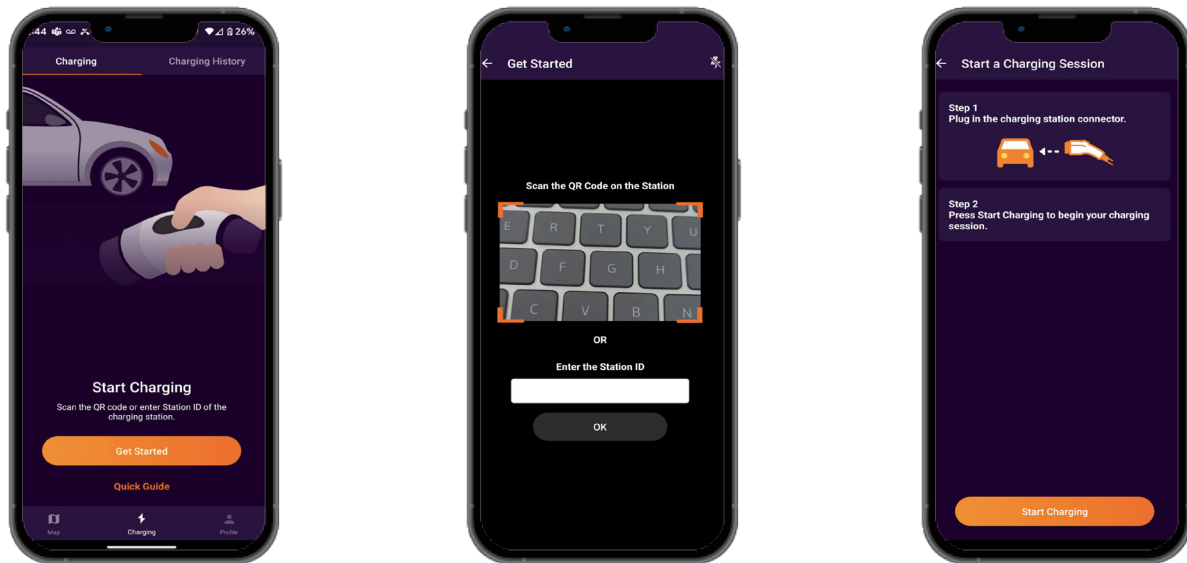
Filter options include:

- **Noodoe Charging Stations**
- **Unoccupied Charging Stations**
- **No-cost Charging Stations**
- **Connector Type**
- **Access Type**
- **Power Level**
- **Membership Only**



Charging Session Activation

By using the Noodoe app, you can enjoy the convenient Scan, Pay, Charge method for EV charging. First, scan the charging station QR code or enter the station ID (it will be displayed clearly on the station). Second, select your payment method and confirm the session rate. This is a chance to apply coupons or discount codes. Third, enter your phone number to receive charging progress notifications.



Charging History

You can track your account's previous charging sessions, payment methods, and receipts in the Charging History tab.

Charging	Charging History
Dec 19, 2023 at 2:09 PM Payment: Google Pay \$2.06 🕒 0hr 2min ⚡ 0.1800 kWh	
Dec 19, 2023 at 2:06 PM Payment: Free charging 🕒 0hr 1min ⚡ 0.0300 kWh	
Dec 19, 2023 at 2:05 PM Payment: Free charging 🕒 0hr 1min ⚡ 0.0200 kWh	
Dec 19, 2023 at 2:03 PM Payment: Free charging	